

CAMPUS





SITE PLAN

Busy Bees Nursery

The Farmhouse

CAMPUS STUDIOS

Block A

Block B

Block C

Block D

Block E

Block F


A33 Basingstoke Road





FIND YOUR FIT

| FLOOR | AREA (SQ FT) | AREA FROM (SQ FT) |
|---------------|--------------|-------------------|
| 3 | 12,887 | 12,887 |
| 2 | 62,638 | 11,342 |
| 1 | 21,092 | 9,748 |
| G | 25,122 | 11,370 |
| CAMPUS STUDIO | 6,942 | 6,942 |
| TOTAL | 128,681 | |

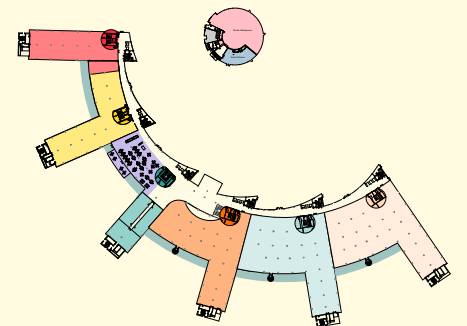


FIND YOUR FIT

| FLOOR | F SPUR | F LINK | E SPUR | E LINK | D SPUR | D LINK | C SPUR | C LINK | B SPUR | B LINK | A SPUR | CAMPUS STUDIOS | TOTAL |
|--------------|---------------|---------------|---------------|--------------|---------------|--------------|----------------------|-------------------|---------|-----------------|---------|----------------|----------------|
| 3 | Adobe | | 12,887 | CGI | | | | | | | | | 12,887 |
| 2 | 11,342 | 9,503 | 11,339 | 9,536 | 11,330 | 9,588 | AspenTech | | | | Baxter | - | 62,638 |
| 1 | 11,344 | 9,748 | Verizon | | | | Verizon/ Investec | Investec | | | | - | 21,092 |
| G | 11,370 | 13,752 | Verizon | | | | LET | Campus Kitchen | Verizon | Verizon/ BCN | Mavenir | 6,942 | 32,064 |
| TOTAL | 34,056 | 33,003 | 24,226 | 9,536 | 11,330 | 9,588 | - | - | - | - | - | 6,942 | 128,681 |

All areas are IPMS3

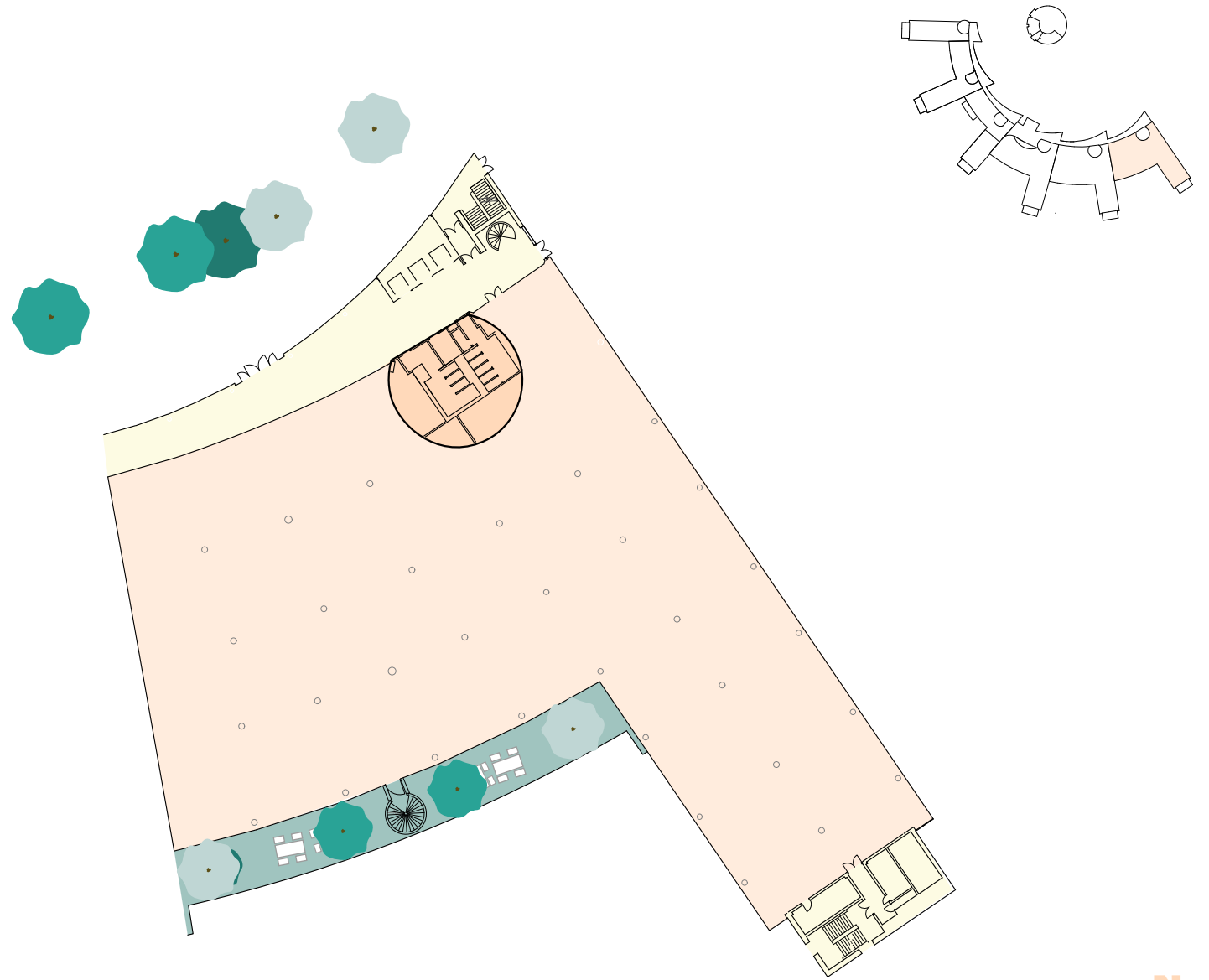
[VIEW 3D STACKER](#)



GROUND FLOOR

F

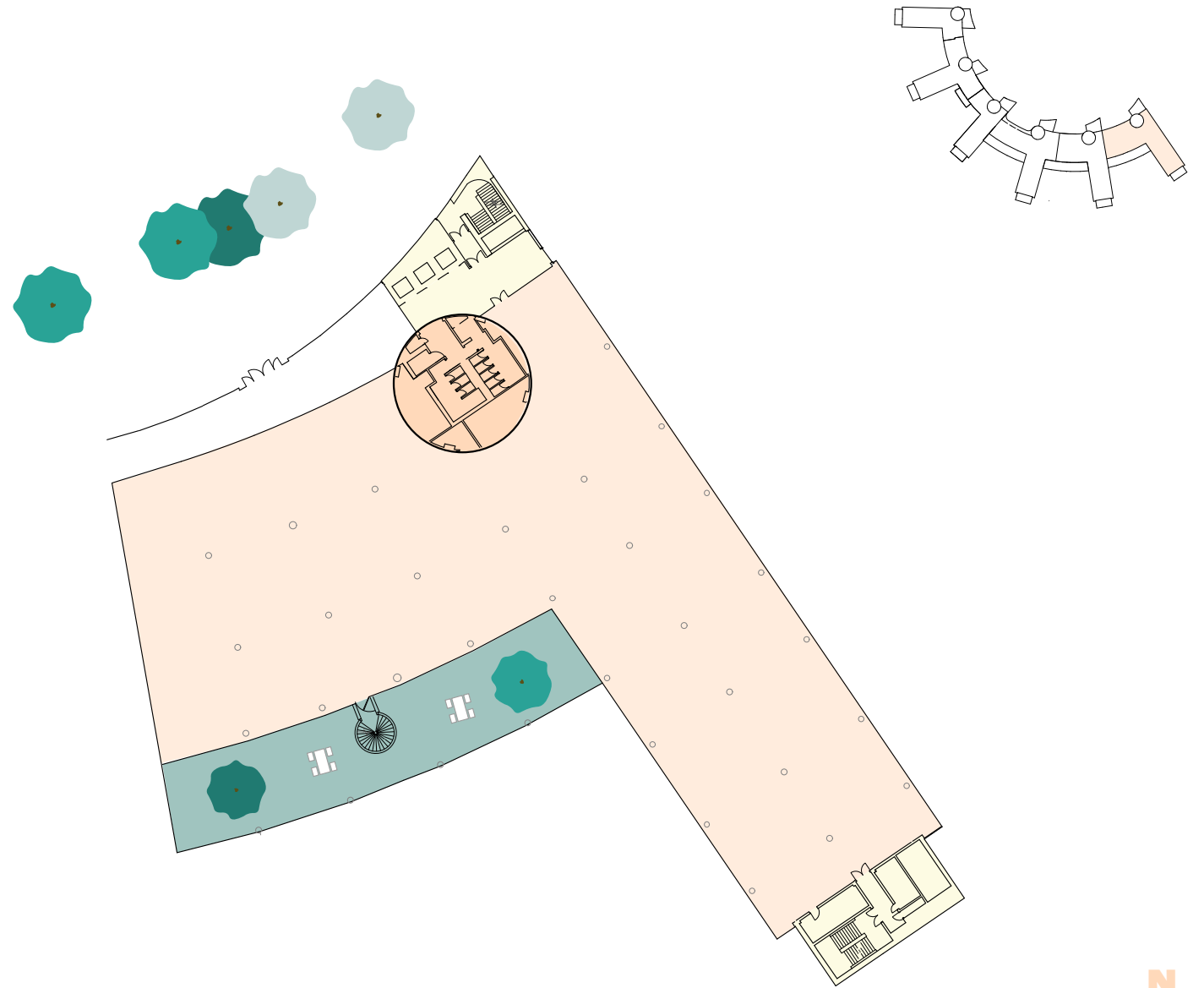
25,122 sq ft
Available Space



FIRST FLOOR

F

21,092 sq ft
Available Space



SECOND FLOOR

D-F

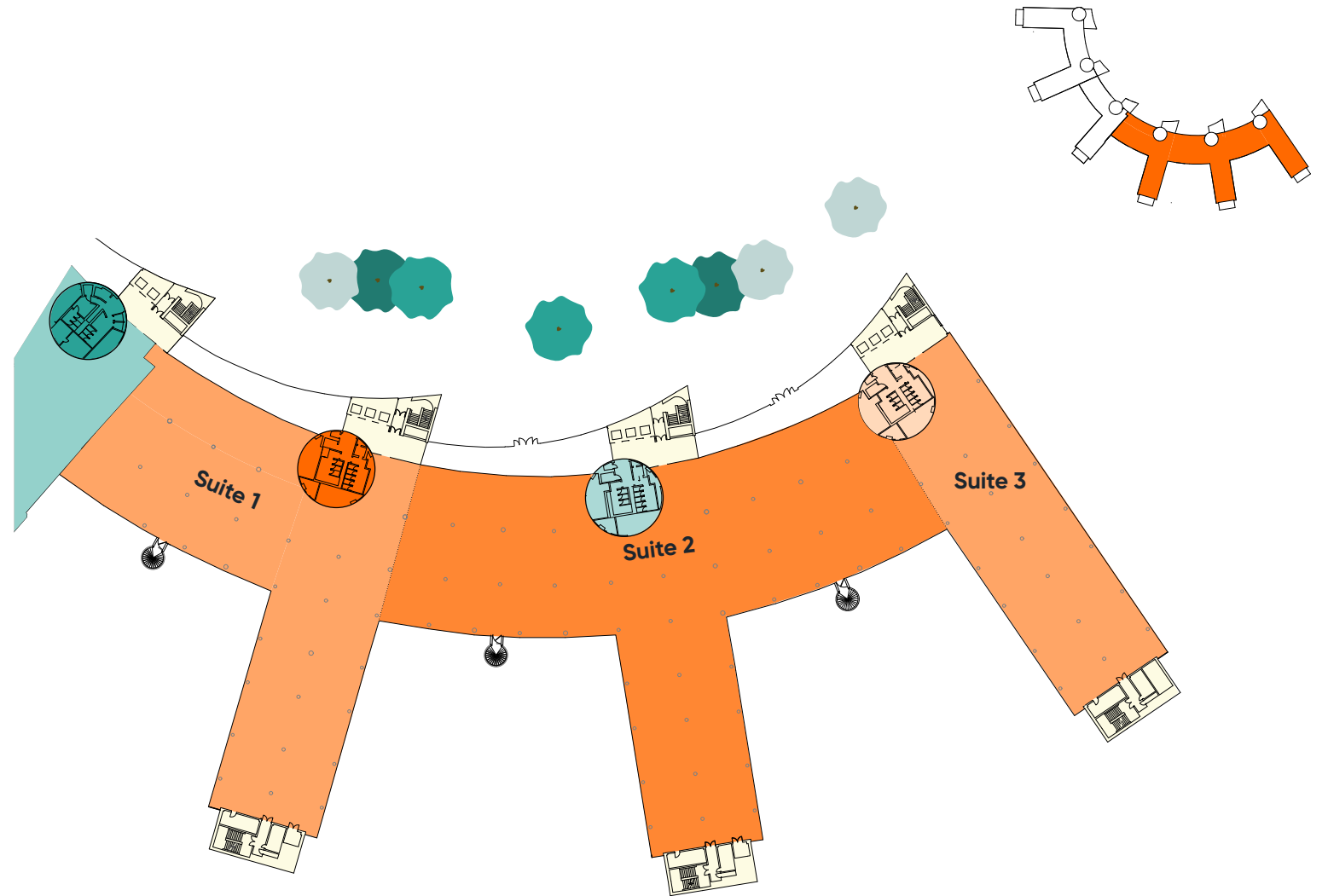
62,638 sq ft
on a single floor

Indicative split
options & combinations

Suite 1: 20,918 sq ft

Suite 2: 30,378 sq ft

Suite 3: 11,342 sq ft

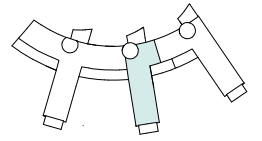
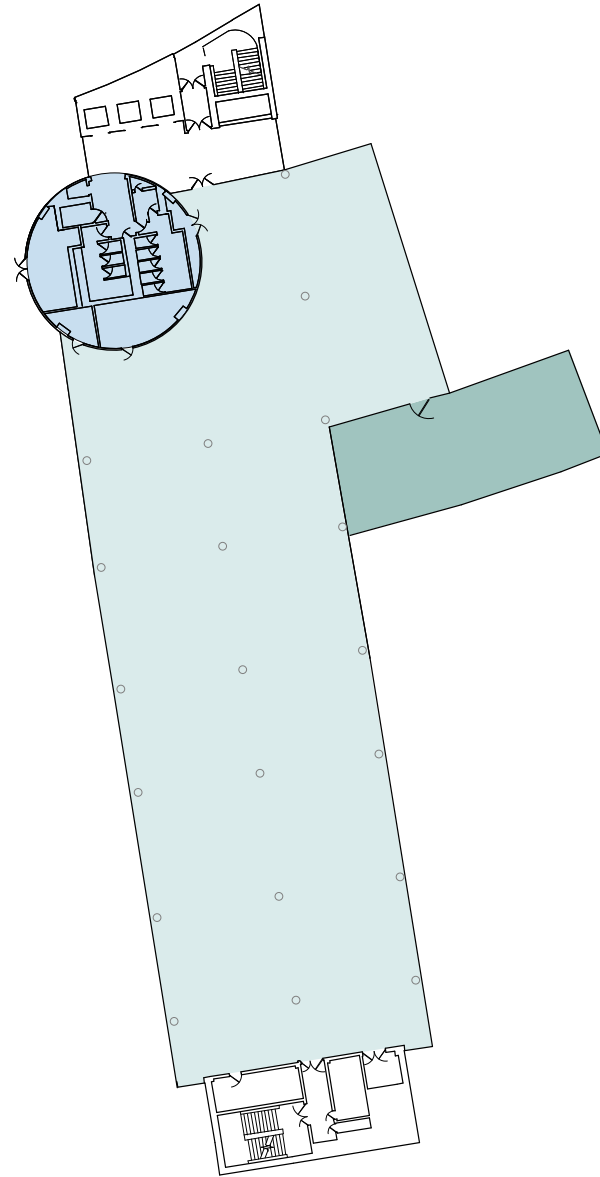


THIRD FLOOR

E

12,887 sq ft

[VIEW GALLERY](#)

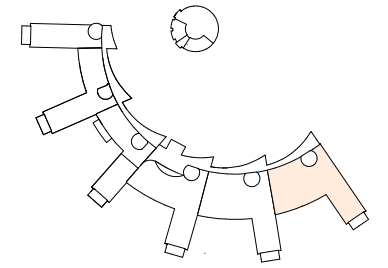
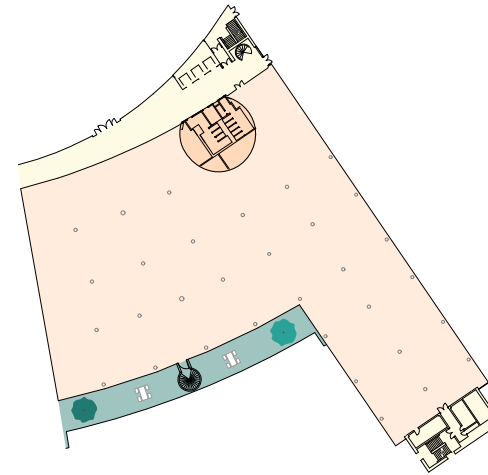


F Block

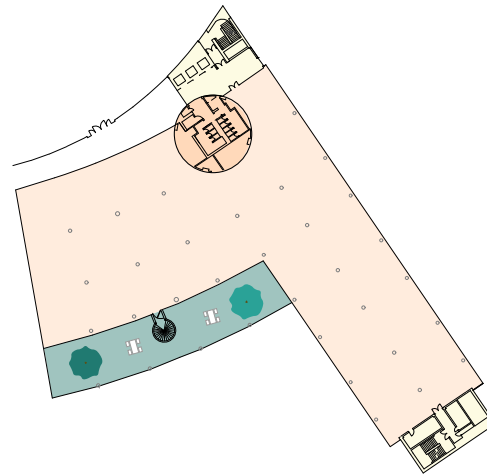
67,059 sq ft
in a self contained
building across
all three floors

Ground: 25,122 sq ft
First: 21,092 sq ft
Second: 20,845 sq ft

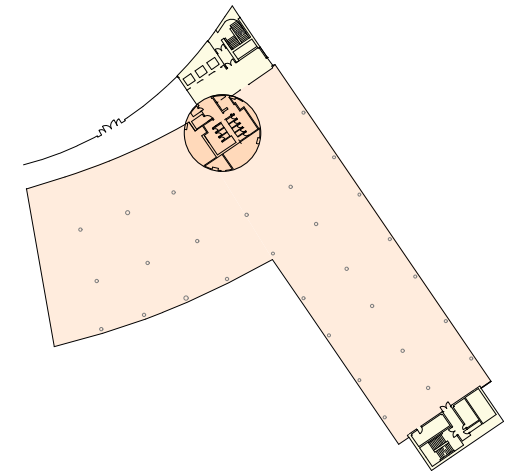
GROUND



FIRST

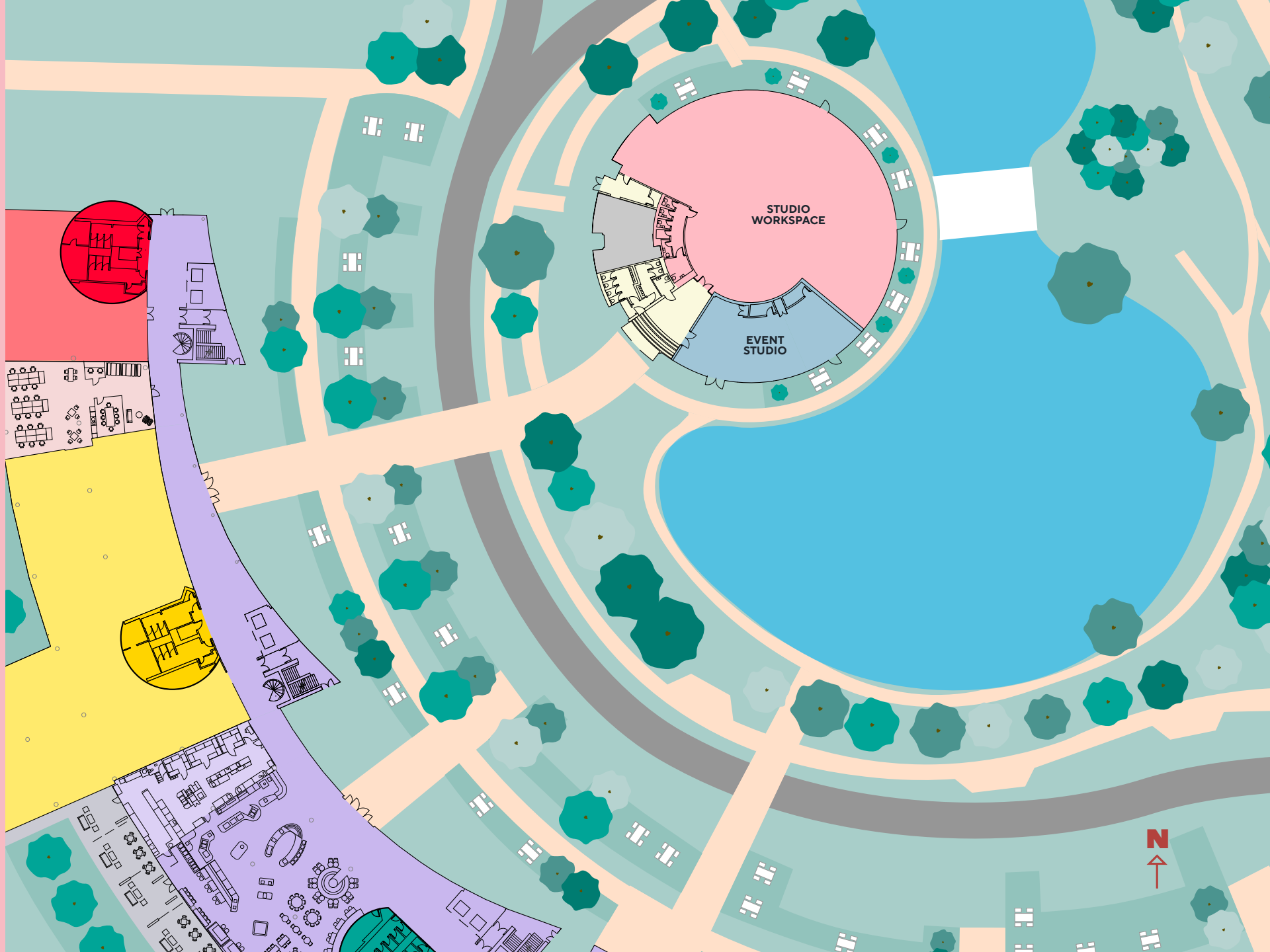
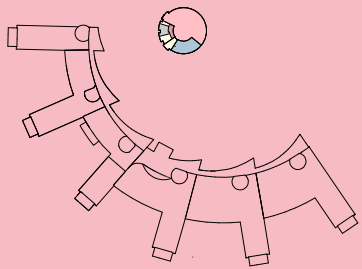


SECOND



CAMPUS STUDIOS

6,942 sq ft
Available Space



Busy Bee's Nursery

The Bee Hive

The Farmhouse

CAMPUS STUDIOS

Allotment

Trim Trail & Outdoor gym equipment

STUDIO WORKSPACE
EVENT STUDIO

A33 Basingstoke Road

THE KITCHEN

TERRACE

RECEPTION

CAFE

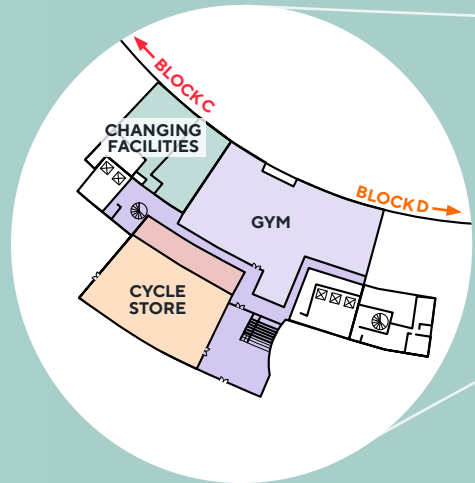
BUSINESS LOUNGE

TOWN HALL & GYM

THE STREET

CAMPUS+

LOWER GROUND



GROUND FLOOR
BLOCK C

CAMPUS+

**An outstanding
fitted workspace
ready for immediate
occupation**

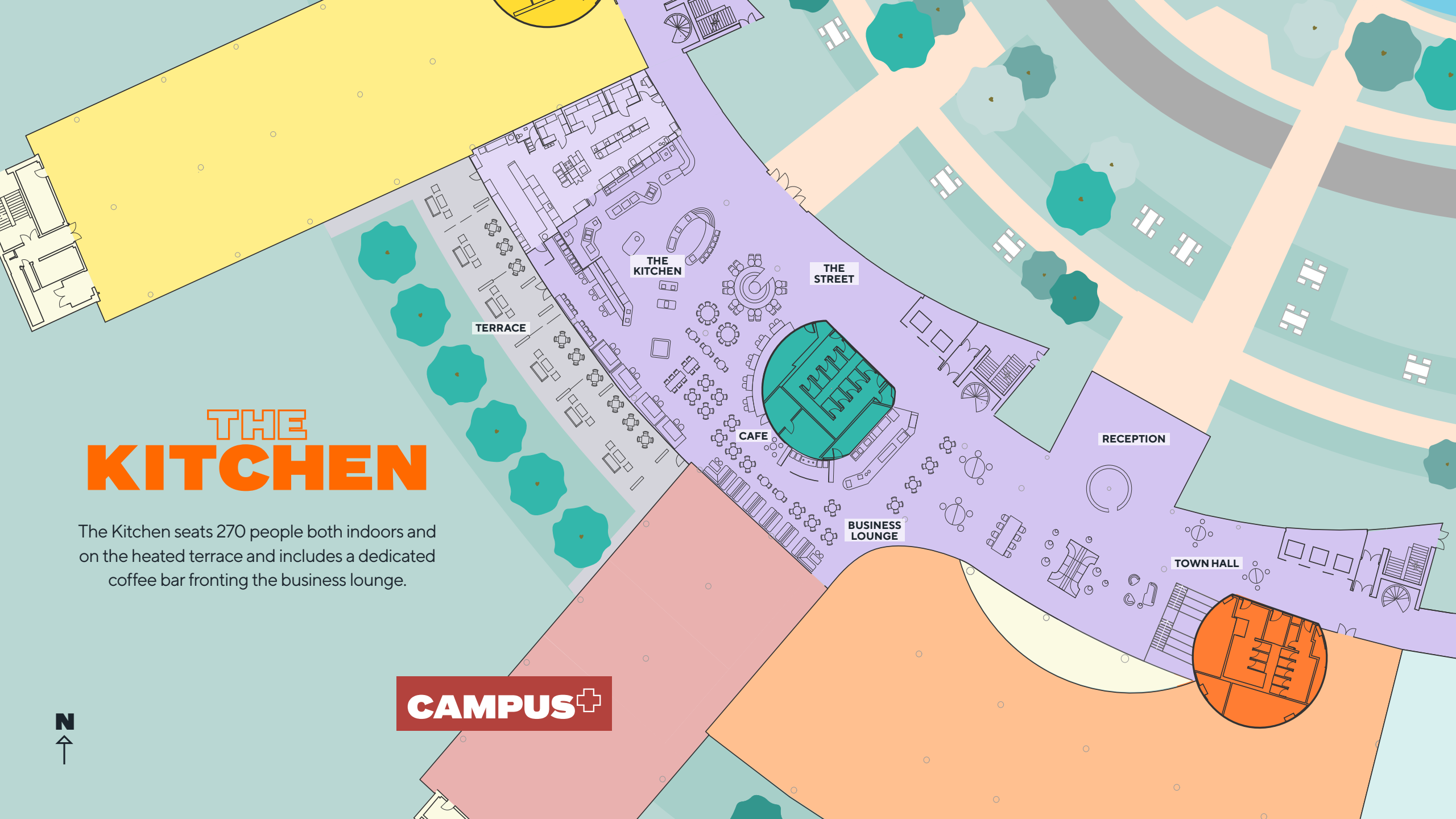
SUITE 1: LET
SUITE 2: LET
SUITE 3: LET
SUITE 4: LET



THE KITCHEN

The Kitchen seats 270 people both indoors and on the heated terrace and includes a dedicated coffee bar fronting the business lounge.

CAMPUS+



Get in touch



RICHARD HARDING

07730 817 019
020 3362 4349
richardharding@brayfoxsmith.com

TOBY LUMSDEN

07796 444 379
020 7629 5456
tobylumsden@brayfoxsmith.com

[campus-reading.com](https://www.campus-reading.com)



JONATHAN GARDINER

07870 555 703
020 7409 8828
jgardiner@savills.com

STUART CHAMBERS

07870 999 339
020 7075 2883
stuart.chambers@savills.com

A PROJECT BY



Alchemy
Asset Management



TRISTAN
CAPITAL PARTNERS

Important notice relating to the Misrepresentation Act 1967 and the Property Misdescriptions Act 1991: (i) the particulars are set out as a general outline only for guidance of intending purchasers or lessees and do not constitute, nor constitute part of, an offer or contract (ii) all descriptions, dimensions, references to condition and necessary permission for use and occupation, and other details are given in good faith and are believed to be correct, but any intending purchasers or occupiers should not rely on them as statements or representations of fact, but must satisfy themselves by inspection or otherwise as to the correctness of each of them. July 2024.

