



CAMPUS+

FULLY FITTED SUITES READY FOR IMMEDIATE OCCUPATION



CAMPUS + SUMMARY

FULLY FITTED SUITES PROVIDING 14-30 WORKSTATIONS

SITUATED IN THE HEART OF THE BUILDING ADJACENT TO MAIN AMENITIES

SIMPLE LEASE AGREEMENT - OPERATIONAL WITHIN 4 WEEKS OF AGREEING TERMS

SUITES ARE FULLY FITTED OUT AND DESIGNED TO INCLUDE MEETING ROOM(S),
SOFT SEATING AREAS & KITCHEN/BREAK OUT AREAS


FULL FIBRE OPTIC BROADBAND CONNECTIVITY TO ALL SUITES

EXPANSIVE 3.5M FLOOR TO CEILING HEIGHT

100% FRESH AIR THROUGH THE NEW DISPLACEMENT AIR CONDITIONING SYSTEM

AS YOUR BUSINESS EXPANDS WE HAVE THE FLEXIBILITY WITHIN
THE BUILDING TO ACCOMMODATE YOUR GROWTH





**CAMPUS IS A 375,000 SQ FT
NEXT GENERATION WORKPLACE.
AN AMENITY RICH COMMUNITY
FOR EVERY TYPE OF BUSINESS.**



PROMINENT NEW ENTRANCE



Feature double height reception

CAMPUS LIFE



Views of The Kitchen, Town Hall, Gym and Campus Studios.

GROUND FLOOR
BLOCK C AND B

CAMPUS+

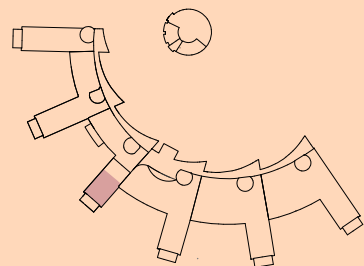
**An outstanding
fitted workspace
ready for immediate
occupation**

SUITE 1: 3,284 SQ FT

SUITE 2: 1,523 SQ FT

SUITE 3: LET

SUITE 4: LET



CAMPUS+

Fully fitted and furnished workspace ready for immediate occupation from 1,523 sq ft. Campus+ provides best-in-class office space, with a contemporary aesthetic.

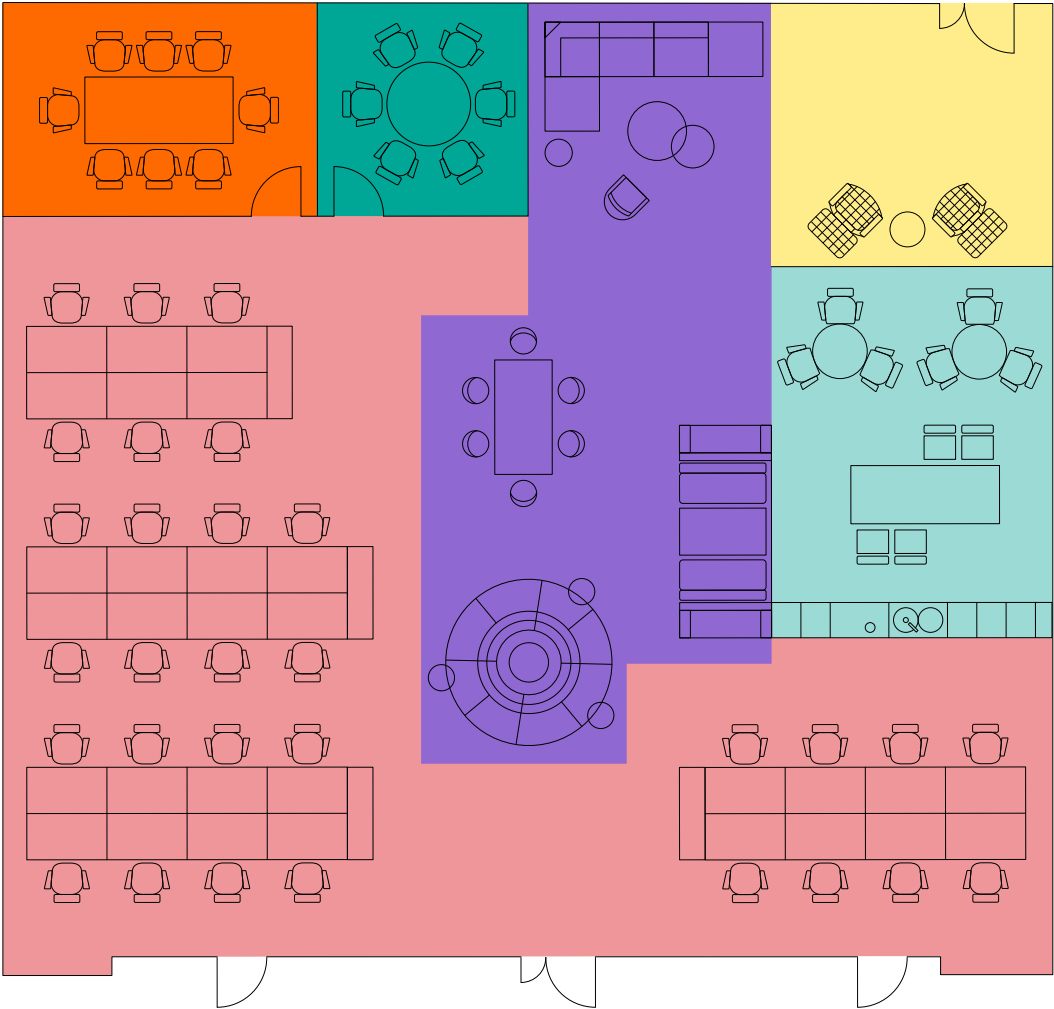
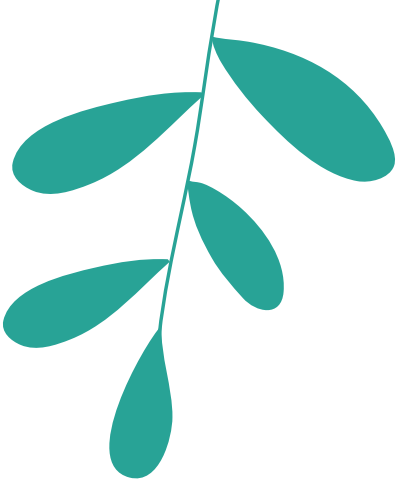
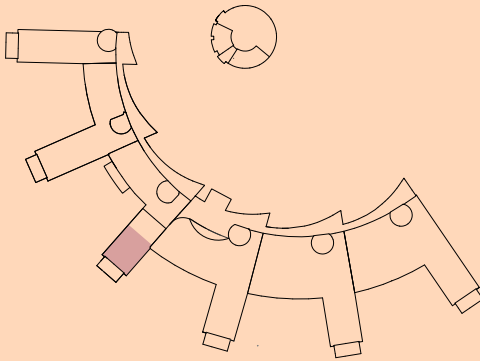


CAMPUS+

SUITE 1: 3,284 SQ FT

GROUND FLOOR
BLOCK C

**An outstanding
fitted workspace
ready for immediate
occupation**



- 30 X WORKSTATIONS
- 1 X 6 PERSON MEETING ROOM
- 1 X 8 PERSON MEETING ROOM
- 1 X KITCHEN / TEA POINT
- RECEPTION AREA
- 1 X TOUCHDOWN AND BANQUETTE SEATING ZONE

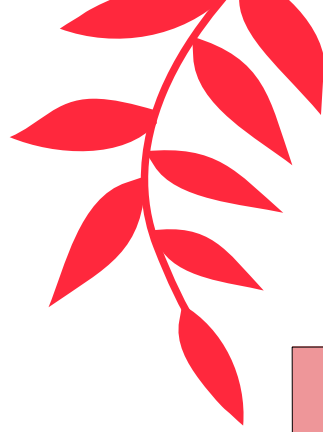
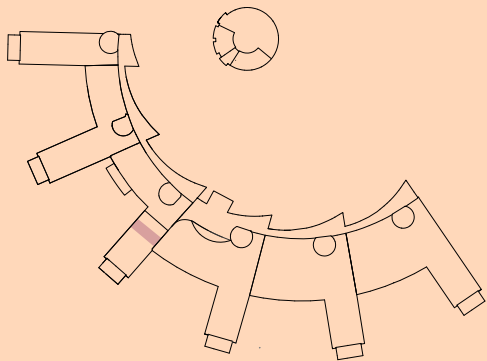


CAMPUS+

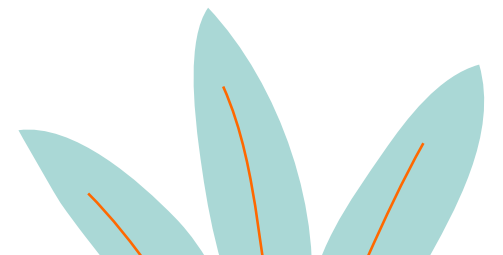
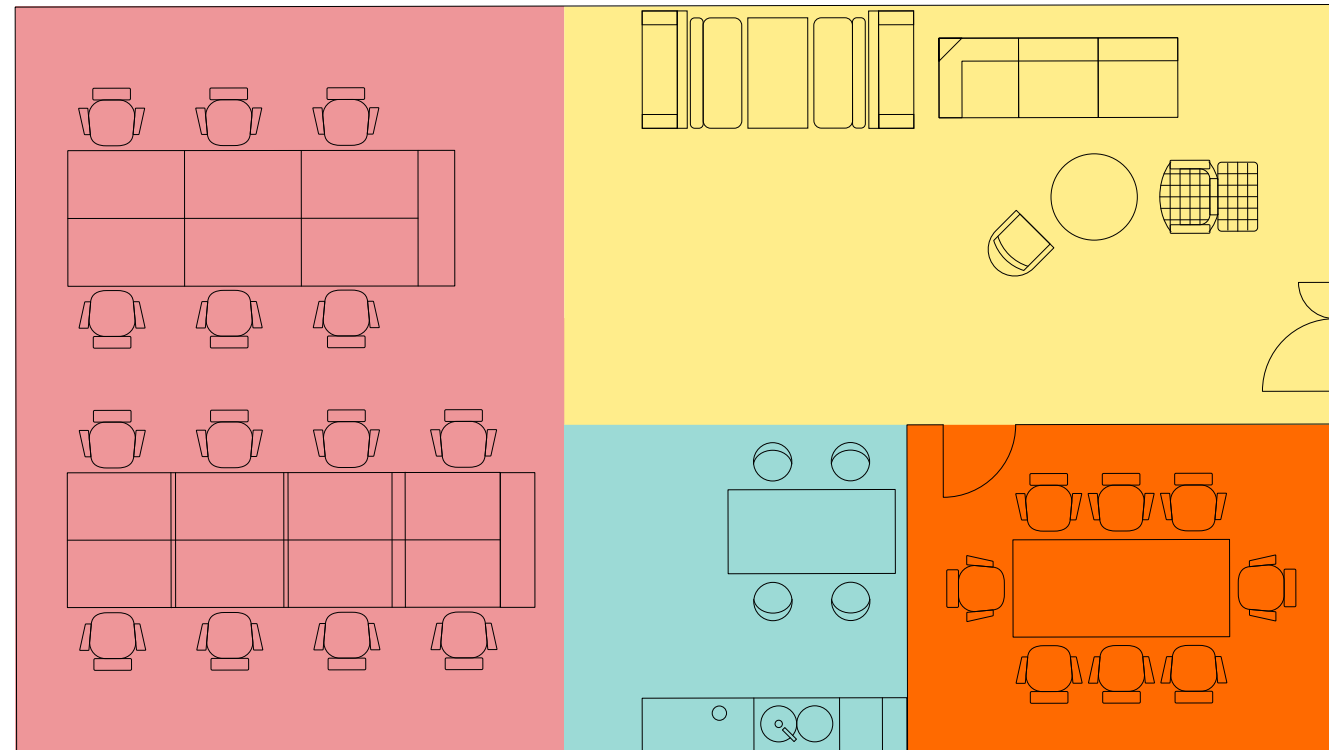
SUITE 2: 1,523 SQ FT

GROUND FLOOR
BLOCK C

**An outstanding
fitted workspace
ready for immediate
occupation**



- 14 X WORKSTATIONS
- 1 X 8 PERSON MEETING ROOM
- 1 X KITCHEN / TEA POINT
- RECEPTION AREA

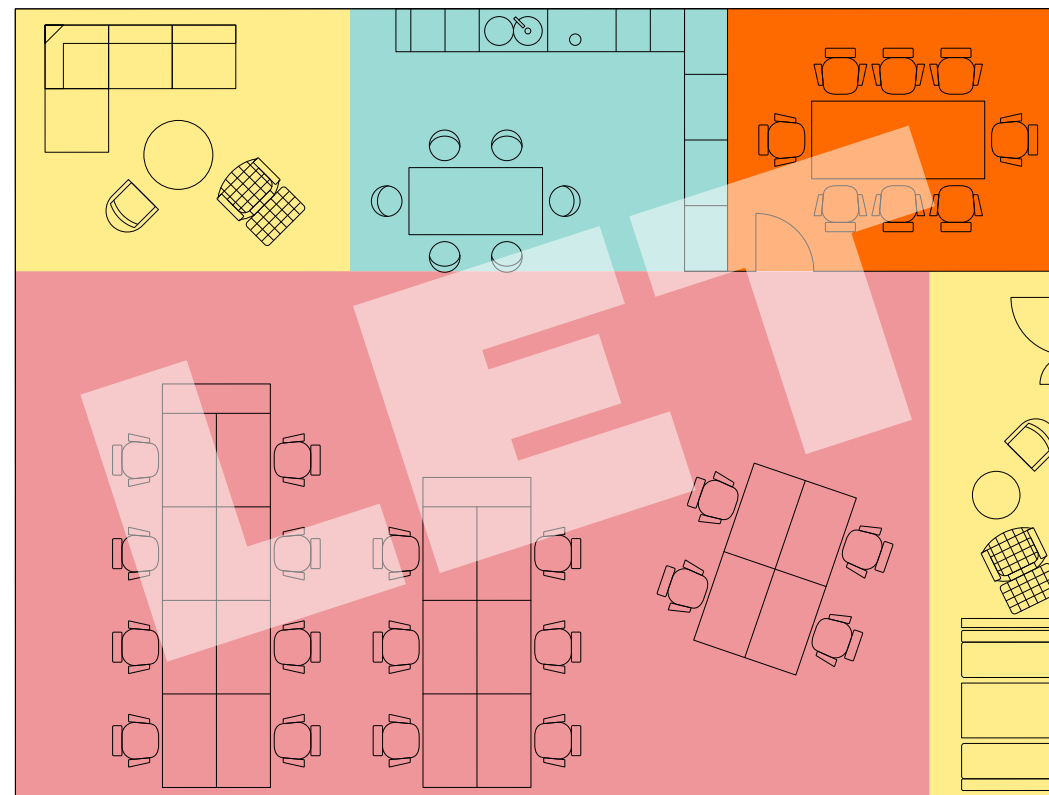
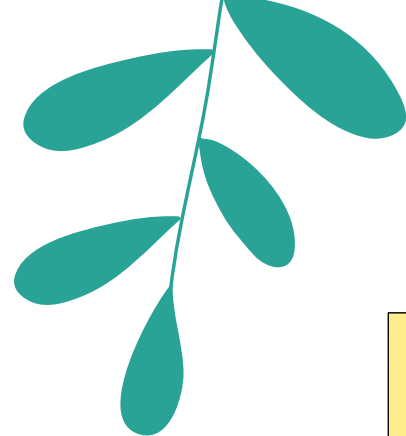
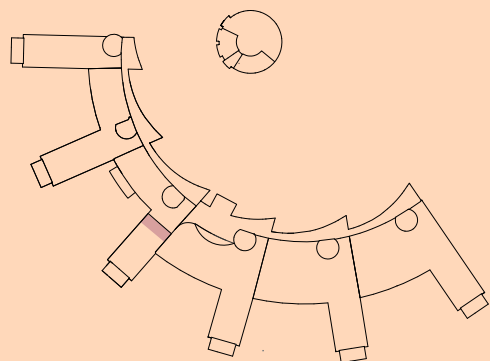


CAMPUS+

SUITE 3: LET

GROUND FLOOR
BLOCK C

**An outstanding
fitted workspace
ready for immediate
occupation**



- 18 X WORKSTATIONS
- 1 X 8 PERSON SEATING AREA
- 1 X KITCHEN AREA
- RECEPTION / BREAKOUT SPACE

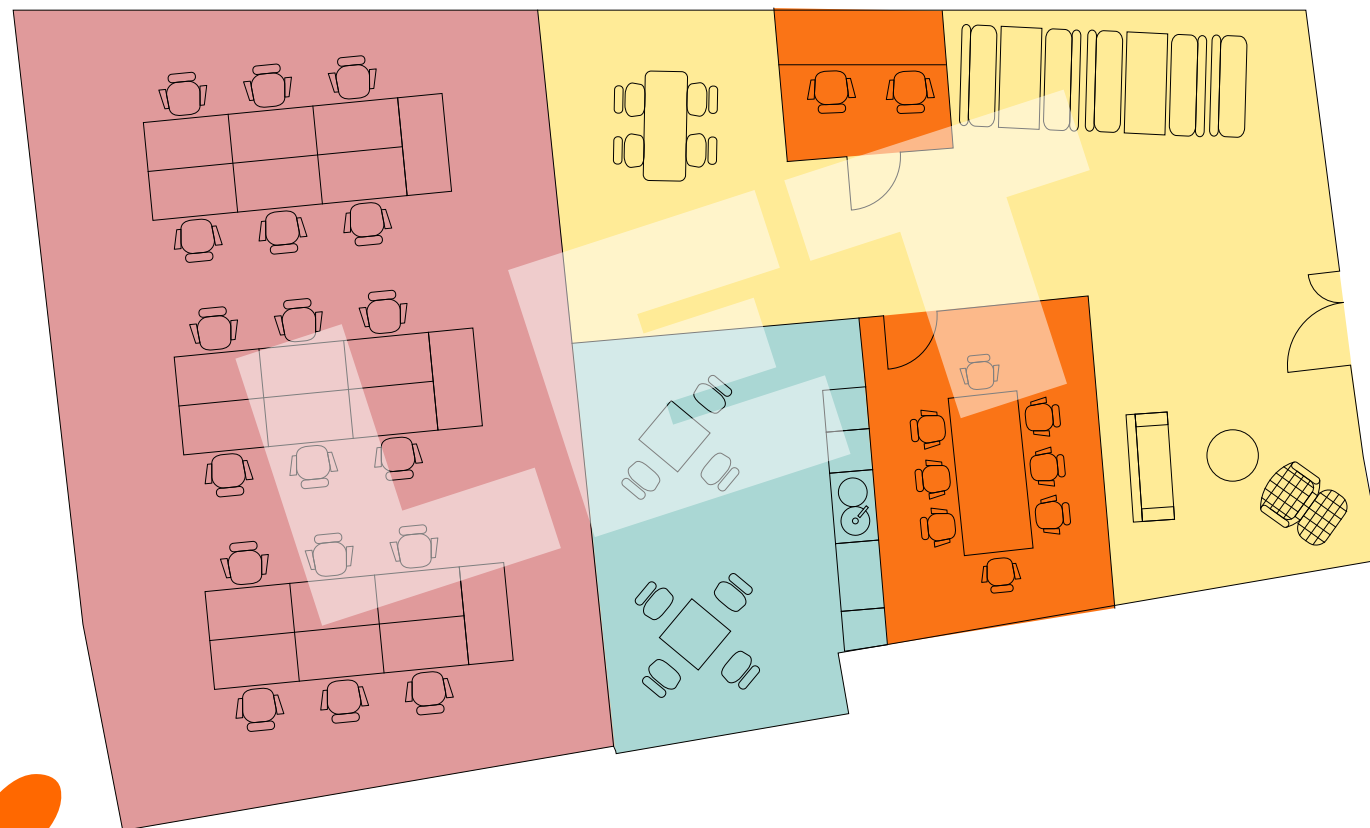
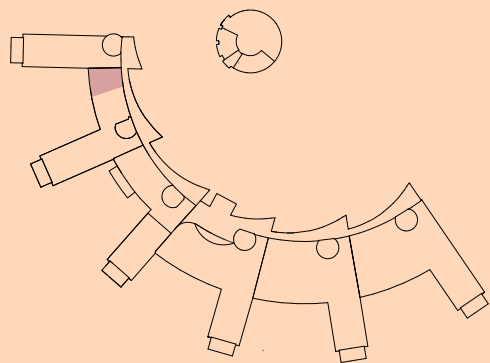


CAMPUS+

SUITE 4: LET

GROUND FLOOR
BLOCK B

**An outstanding
fitted workspace
ready for immediate
occupation**



- 18 X WORKSTATIONS
- PERSON MEETING ROOM
- KITCHEN AREA
- RECEPTION / BREAKOUT AREAS

BENEFITS OF **CAMPUS**



**5,000 SQ FT WELLBEING, GYM AND FITNESS FACILITY WITH
BRAND NEW SHOWERS AND CHANGING ROOMS**

YEAR ROUND DIVERSE CALENDAR OF POP UP EVENTS

BESPOKE WORKPLACE CAMPUS APP

7,500 SQ FT FRESH AND SUSTAINABLE FOOD OFFERING AT THE "KITCHEN"

PARKING AT 1:325 SQ FT

TOWN HALL/CONFERENCE FACILITY ON SITE FOR THE EXCLUSIVE USE OF THE TENANTS

**ESTATE WIDE COMMITMENT TO THE ESG AGENDA INCLUDING WELL
ACCREDITATION AND NUMEROUS SUSTAINABILITY MEASURES**





CONNECTIONS

By Car

All times from Campus



1 Min	16 Mins	24 Mins	26 Mins	30 Mins	31 Mins	35 Mins	50 Mins
Junction 11 M4	Reading Train Station	Basingstoke A33	Maidenhead M4	Newbury M4	Slough M4	Heathrow Airport M4	Oxford M4 & A34

By Bus No 600

Buses run frequently throughout the day



6 Mins	17 Mins
MereOak Park & Ride	Reading Station Every 15 minutes

By Train

All times from Reading Station



12 Mins	23 Mins	23 Mins	24 Mins	27 Mins	56 Mins	1h 1 Min	1h 8 Mins	1h 12 Mins	1h 28 Mins
Maidenhead	Slough	Oxford	London Paddington	Basingstoke	Heathrow Airport	Waterloo	Bristol	Clapham Junction	Gatwick Airport

Elizabeth Line

All times from Reading Station



22 Mins	38 Mins	42 Mins	50 Mins	54 Mins	55 Mins	59 Mins	1h 1 Mins	1h 9 Mins
Slough	Heathrow	Ealing Broadway	London Paddington	Bond Street	Tottenham Court Road	Farringdon	Liverpool Street	Canary Wharf

Get in touch

**RICHARD HARDING**

07730 817 019
020 3362 4349
richardharding@brayfoxsmith.com

TOBY LUMSDEN

07796 444 379
020 7629 5456
tobylumsden@brayfoxsmith.com

campus-reading.com

**JONATHAN GARDINER**

07870 555 703
020 7409 8828
jgardiner@savills.com

STUART CHAMBERS

07870 999 339
020 7075 2883
stuart.chambers@savills.com

A PROJECT BY

**ALCHEMY
ASSET
MANAGEMENT**



TRISTAN
CAPITAL PARTNERS

Important notice relating to the Misrepresentation Act 1967 and the Property Misdescriptions Act 1991: (i) the particulars are set out as a general outline only for guidance of intending purchasers or lessees and do not constitute, nor constitute part of, an offer or contract (ii) all descriptions, dimensions, references to condition and necessary permission for use and occupation, and other details are given in good faith and are believed to be correct, but any intending purchasers or occupiers should not rely on them as statements or representations of fact, but must satisfy themselves by inspection or otherwise as to the correctness of each of them. November 2023.

